



FY 2018Q1 TB/HIV Partner Performance Meeting



23rd March 2018



Presentation outline



- TB_PREV
- TX_TB
- TB_STAT
- TB_ART



FY2018Q1: TB_PREV Overall Performance



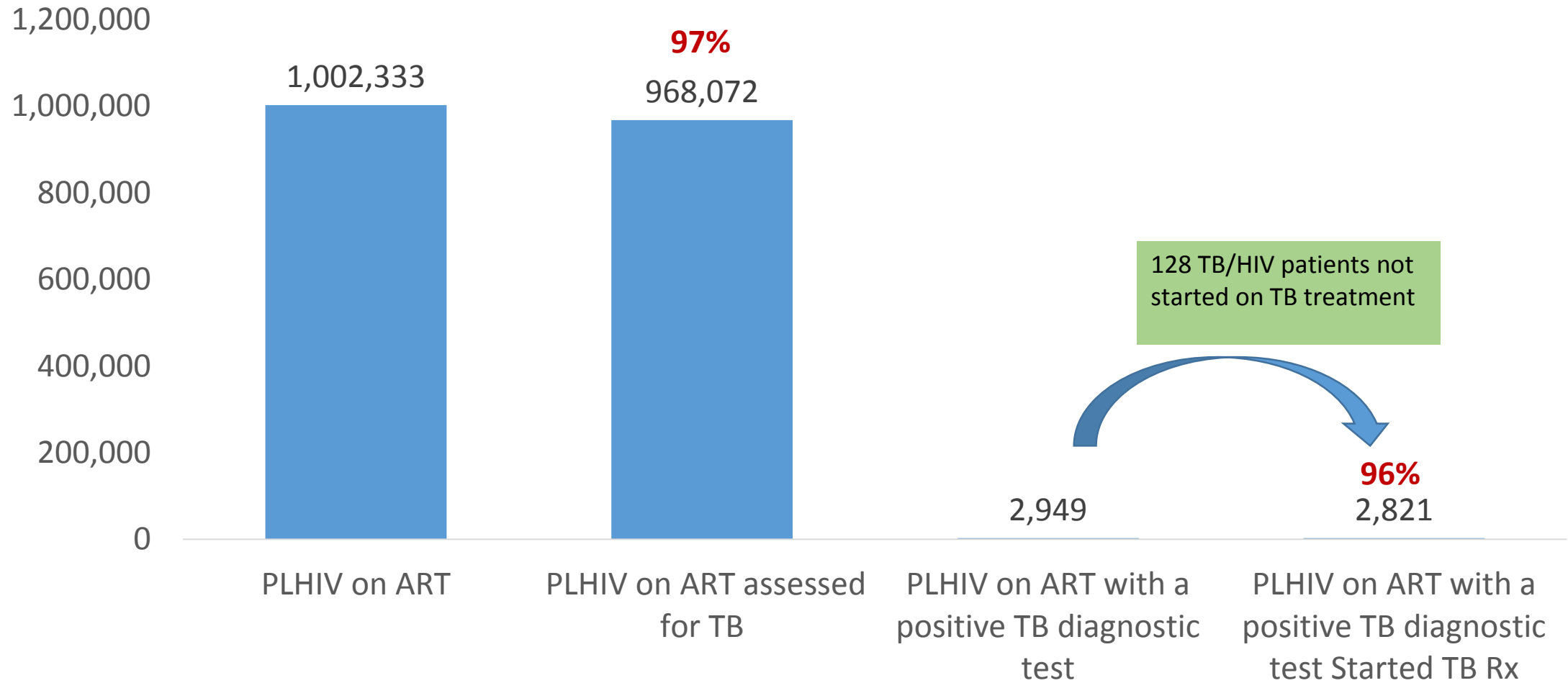
IM Name	Program Performance			Output Vs Target			
	Number of ART patients who completed a course of IPT	Number of ART patients who are expected to complete a course of IPT	% IPT completion rate	TB_PREV (N) Target	TB_PREV (D) Target	% TB_PREV (N) Target Achieved	% TB_PREV (D) Target Achieved
Overall Performance	1,715	2,900	59%	143,987	287,967	1%	1%

FY2018Q1: TB_PREV Performance by IM

IM Name	Agency	Program Performance			Output Vs Target			
		TB_PREV(N) Results	TB_PREV(D) Results	% IPT completion rate	TB_PREV(N) Target	TB_PREV(D) Target	% TB_PREV(N) Target Achieved	%TB_PREV(D)Target Achieved
MUSPH/FELLOWS/Rakai	CDC	7	7	100%	1,712	3,419	0%	0%
UEC	CDC	93	97	96%	1,440	2,874	6%	3%
Children AIDS Fund	CDC	8	9	89%	1,246	2,492	1%	0%
Baylor/SNAPS – WEST	CDC	121	137	88%	4,619	9,201	3%	1%
TASO/HIV/AIDS & TB/PCT	CDC	141	216	65%	2,387	4,771	6%	5%
IDI W & WN	CDC	66	103	64%	14,373	28,735	0%	0%
Masaka Region	CDC	273	582	47%	11,287	22,588	2%	3%
Mubende Region	CDC	89	305	29%	7,996	16,006	1%	2%
TASO/SOROTI Region	CDC	11	51	22%	3,880	7,762	0%	1%
IDI/Kampala Region	CDC	53	284	19%	17,825	35,647	0%	1%
UPS	CDC	0	0	0%	412	824	0%	0%
UPMB	CDC	0	0	0%	857	1,716	0%	0%
REFUGEE-IDI	CDC	0	0	0%	2,051	4,094	0%	0%
Fort Portal Region	CDC				4,481	8,998	0%	0%
WALTER REED/MUWRP	DOD	4	4	100%	9,969	19,934	0%	0%
RTI/UPDF	DOD	0	0	0%	3,029	6,059	0%	0%
STATE - UNHCR	STATE	38	48	79%	854	1,708	4%	3%
CEM/PHS	USAID	3	3	100%	679	1,358	0%	0%
URC/RHITES EC	USAID	389	441	88%	12,737	25,469	3%	2%
Intra Health/RHITES E	USAID	69	82	84%	6,050	12,086	1%	1%
RHITES-Lango	USAID	111	152	73%	13,507	27,013	1%	1%
RHITES-Acholi	USAID	17	25	68%	8,347	16,694	0%	0%
EGPAF/RHITES - SW	USAID	206	328	63%	13,688	27,394	2%	1%
HHIWA	USAID	16	26	62%	139	280	12%	9%
REFUGEE - RHITES Acholi	USAID	0	0	0%	422	845	0%	0%



FY 18Q1: TX_TB Cascade



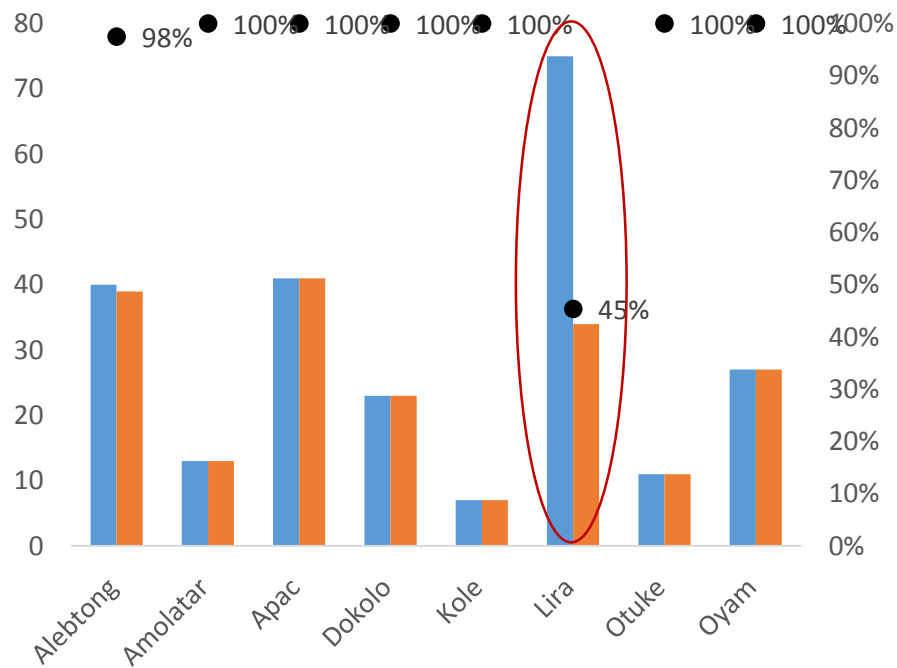
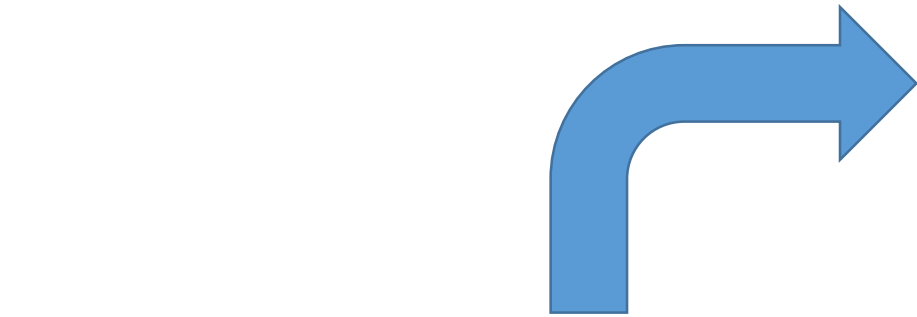


FY 2018Q1: TX_TB Performance by IM



IM Name	PLHIV on ART	PLHIV on ART Screened	PLHIV on ART with positive TB diagnostic test	PLHIV on ART started on TB treatment	% PLHIV on ART Screened	% PLHIV on ART with positive TB diagnostic test	% PLHIV on ART started on TB treatment
Baylor SNAPS WEST	78,264	77,503	192	191	99.0%	0.2%	99.5%
CAF	13,263	12,131	22	22	91.5%	0.2%	100.0%
CEM/UPHS	11,272	11,133	27	27	98.8%	0.2%	100.0%
HIWA	1,765	1,762	8	8	99.8%	0.5%	100.0%
IDI W & WN	78,357	77,872	279	266	99.4%	0.4%	95.3%
Intrahealth/RHITES E	47,050	44,329	139	128	94.2%	0.3%	92.1%
Kampala Region	138,636	133,607	340	340	96.4%	0.3%	100.0%
Masaka Region	47,581	47,348	149	145	99.5%	0.3%	97.3%
Mubende Region	61,901	61,322	238	223	99.1%	0.4%	93.7%
MUWRP	44,604	44,017	158	154	98.7%	0.4%	97.5%
RAKAI/FELLOWS	23,757	22,012	40	33	92.7%	0.2%	82.5%
RHITES LANGO	67,743	66,261	237	195	97.8%	0.4%	82.3%
RHITES- SW	133,162	127,010	360	350	95.4%	0.3%	97.2%
RHITES_ACHOLI	51,280	51,907	156	148	101.2%	0.3%	94.9%
Soroti Region	31,591	31,336	63	60	99.2%	0.2%	95.2%
STATE/UNHCR	6,163	5,689	6	6	92.3%	0.1%	100.0%
TASO/ HIV/AIDS/TB services	33,609	31,203	80	80	92.8%	0.3%	100.0%
UEC	31,041	29,229	73	73	94.2%	0.2%	100.0%
UPDF/RTI	18,873	17,255	50	46	91.4%	0.3%	92.0%
UPMB	7,481	6,974	19	19	93.2%	0.3%	100.0%
UPS	6,893	5,048	55	55	73.2%	1.1%	100.0%
URC/RHITES EC	68,047	63,124	258	252	92.8%	0.4%	97.7%
Overall	1,002,333	968,072	2,949	2,821	96.6%	0.3%	95.7%
Scale Used							
TB Assessed	<80%	80% -<90%	>=90%				
% PLHIV on ART diagnosed with TB	<1.5%	1.5-< 2%	>=2%				
% PLHIV on ART started on TB Rx	<80%	80% -<90%	>=90%				

TX_TB Deep Dive in Lira District – RHITES LANGO



- PLHIV on ART assessed for TB with a positive diagnostic test
- PLHIV on ART with a positive diagnostic test started on TB Rx
- % PLHIV on ART with a positive diagnostic test started on TB Rx

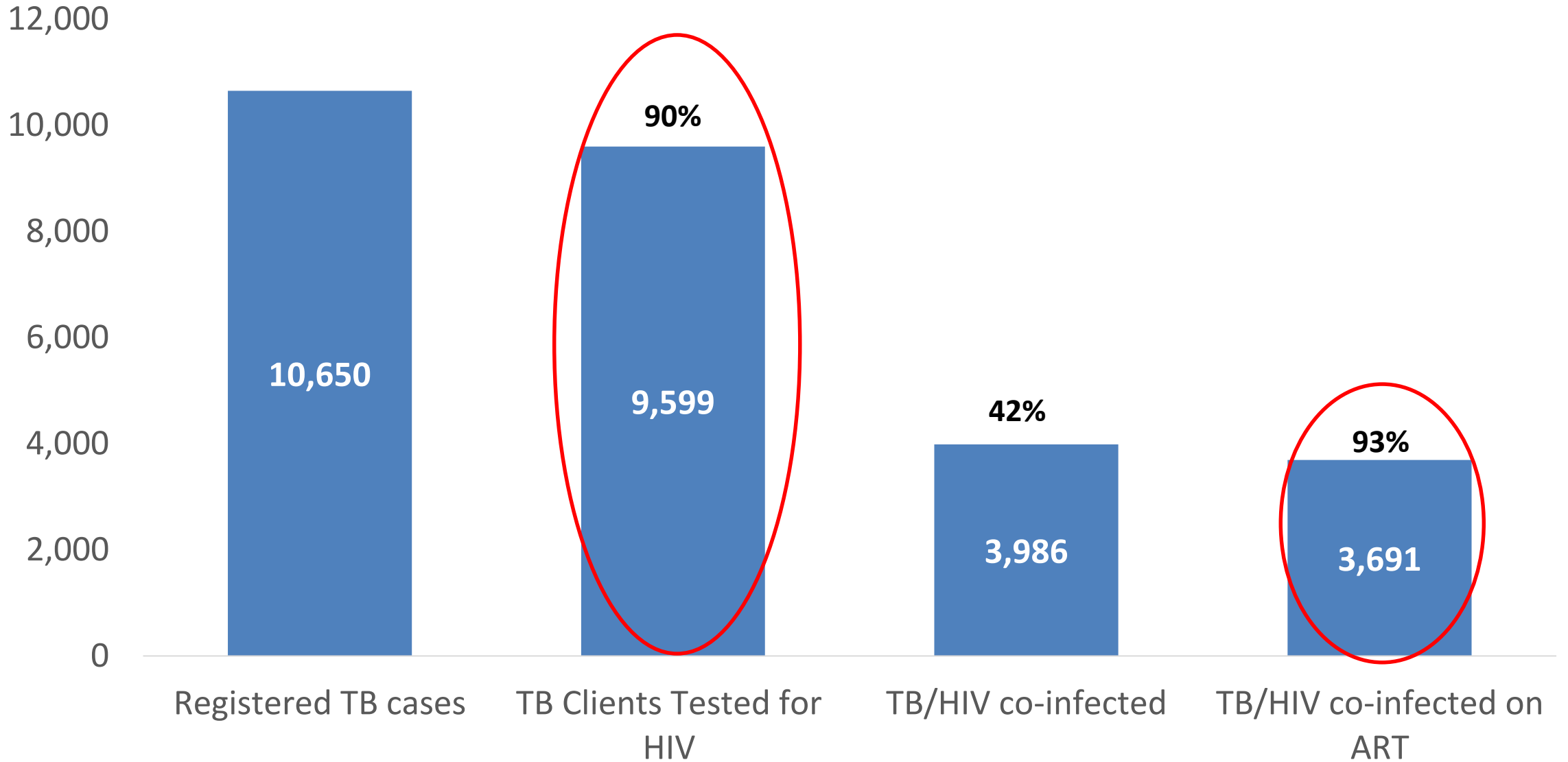
District	PLHIV on ART	PLHIV on ART assessed for TB	PLHIV on ART assessed for TB with a positive diagnostic test	PLHIV on ART with a positive diagnostic test started on TB Rx	% PLHIV on ART assessed for TB	% PLHIV on ART assessed for TB with a positive diagnostic test	% PLHIV on ART with a positive diagnostic test started on TB Rx
Lira	20,227	19,640	75	34	97.1%	0.4%	45.3%



Health Facility Name	PLHIV on ART	PLHIV on ART TB Assessed	PLHIV on ART diagnosed with TB	Started on TB RX	% PLHIV on ART assessed for TB	% PLHIV on ART assessed for TB with a positive diagnostic test	% PLHIV on ART with a positive diagnostic test started on TB Rx
Agali HC III	179	179		0	100.0%	0.0%	
Amach HC IV	1396	1,396	2	2	100.0%	0.1%	100.0%
Amuca SDA HC III	255	255		0	100.0%	0.0%	
Aromo HC III	504	499	1	1	99.0%	0.2%	100.0%
Ayago HC III	230	230	1	1	100.0%	0.4%	100.0%
Barapwo HC III	245	245	2	2	100.0%	0.8%	100.0%
Barr HC III	1238	1,222	2	2	98.7%	0.2%	100.0%
Boroboro HC III	219	219		0	100.0%	0.0%	
Charis HC III	440	440		0	100.0%	0.0%	
Lira Medical Centre	128	128	0	0	100.0%	0.0%	
Lira RRH	11647	11,108	47	6	95.4%	0.4%	12.8%
Ngetta HC III	289	284	0	0	98.3%	0.0%	
Ober HC III	760	744		0	97.9%	0.0%	
Ogur HC IV	1329	1,329	18	18	100.0%	1.4%	100.0%
Ongica HC III	207	201		0	97.1%	0.0%	
PAG Mission HC IV	1161	1,161	2	2	100.0%	0.2%	100.0%



FY18 Results Q1: TB/HIV Cascade

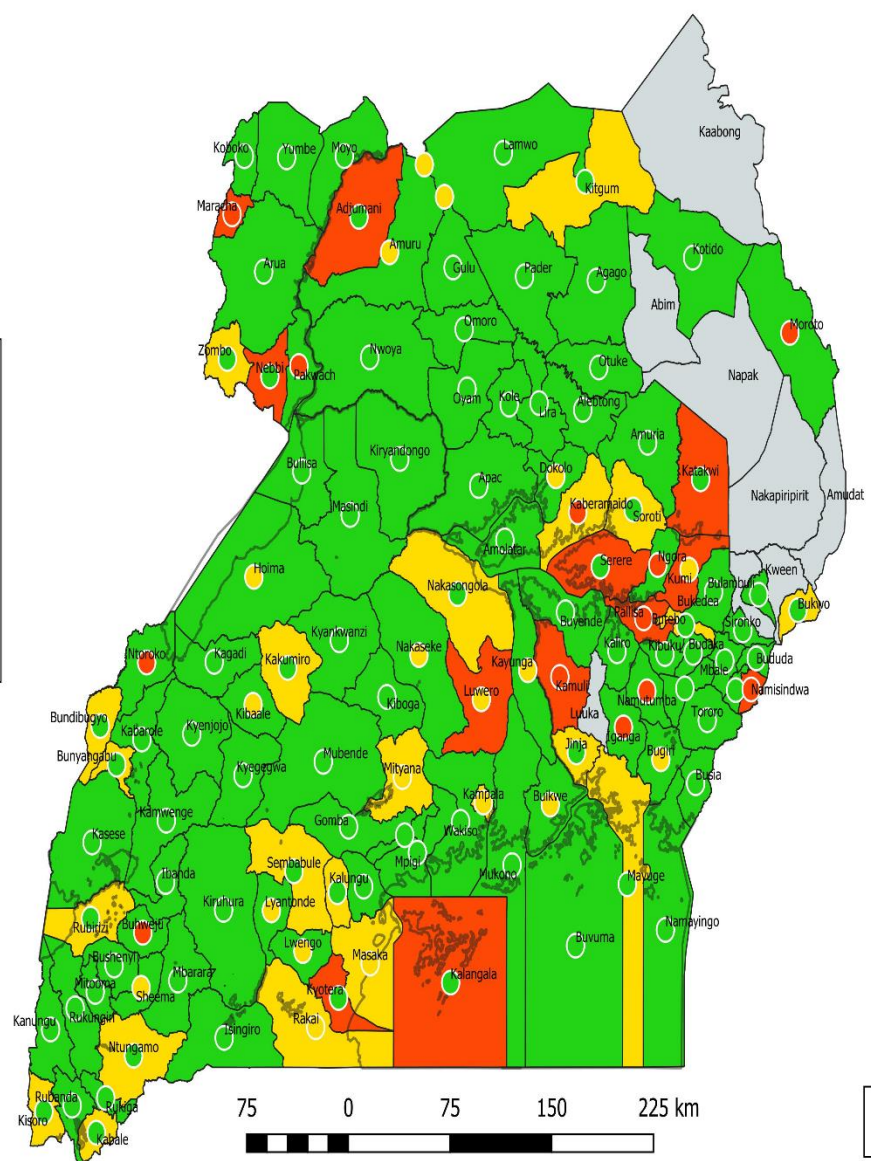
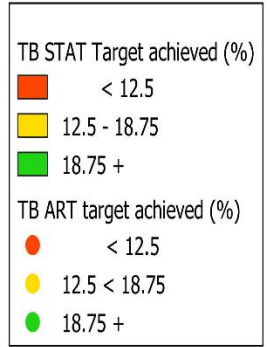
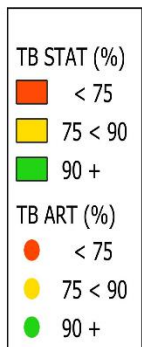


FY 2018 Q1 TB/HIV Performance by IM

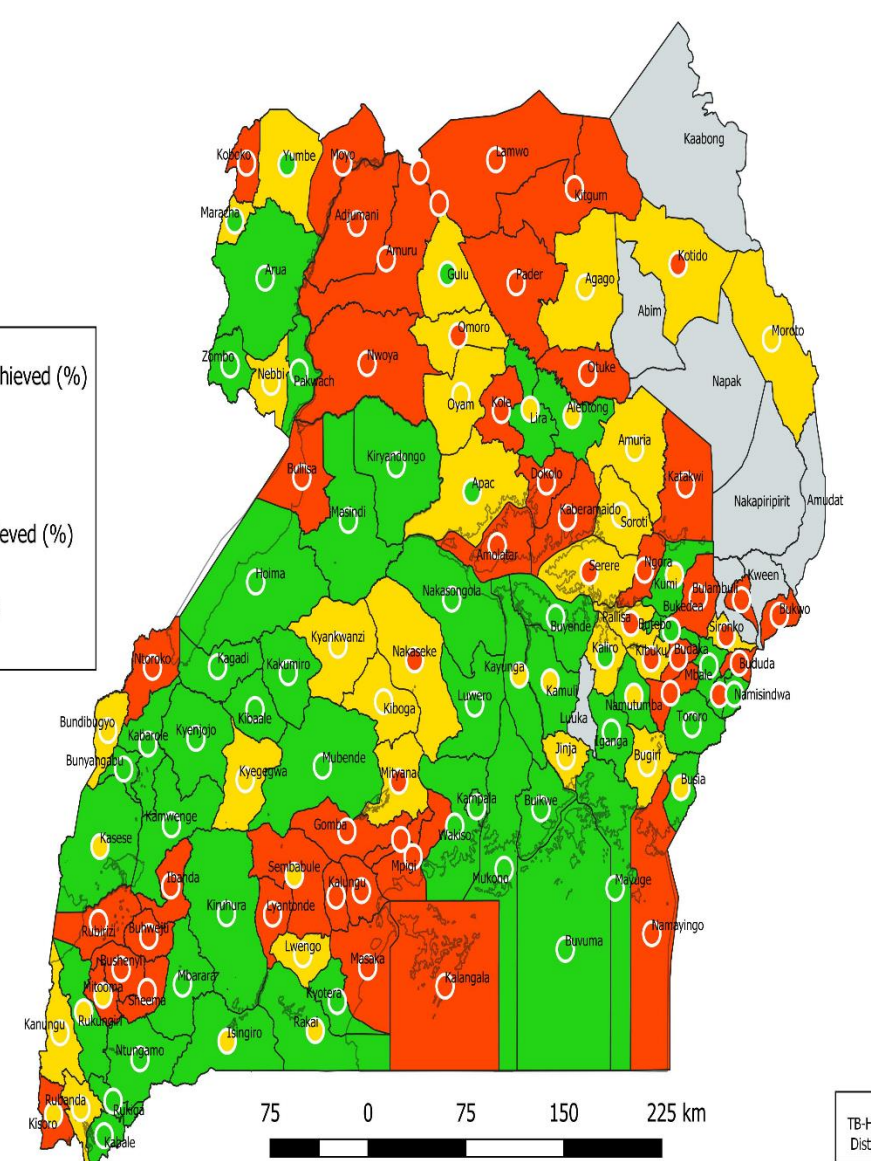
TB_STAT				TB_ART		
First Half Mechanisms	FY18 Target	FY18 Result by Q1	Progress to Date	FY18 Target	FY18 Result by Q1	Progress to Date
BAYLOR SNAPS	1,478	522	35%	482	211	44%
TASO	272	103	38%	138	73	53%
MUSPH Rakai	277	124	45%	134	53	40%
UEC	685	286	42%	323	124	38%
CEM/PHS	356	79	22%	155	29	19%
Full Year Mechanisms	FY18 Target	FY18 Result by Q1	Progress to Date	FY18 Target	FY18 Result by Q1	Progress to Date
UPMB	234	76	32%	80	15	19%
CAF	55	46	84%	26	27	104%
UPS	307	97	32%	147	39	27%
STATE	215	50	23%	72	4	6%
RTI/UPDF	1,046	128	12%	523	45	9%
WALTER REED	1,468	480	33%	660	180	27%
HHIWA	39	25	64%	19	7	37%
URC/RHITES EC	4,001	852	21%	1,483	276	19%
Intra Health/RHITES E	4,017	704	18%	1,265	191	15%
EGPAF/RHITES - SW	5,992	1,008	17%	2,435	428	18%
RHITES-Acholi	4,844	564	12%	2,067	248	12%
RHITES-Lango	4,799	630	13%	2,211	264	12%
IDI W & WN	4,946	1,385	28%	1,449	428	30%
IDI_Kampala Region	1,808	1,157	64%	883	498	56%
Rakai_Masaka Region	8,514	463	5%	4,553	234	5%
Mildmay_Mubende Re	3,031	559	18%	1,510	230	15%
TASO_SOROTI Region	2,087	261	13%	816	87	11%
Scale used						
Full Year Mechanisms	<12.5%	>=12.5%,<18.75%	>=18.75%			
1st Half Mechanisms	<25%	>=25%,<37.5%	>=37.5%			

TB/HIV Cascade: Performance by District

TB/HIV Cascade: Output Vs Target by District

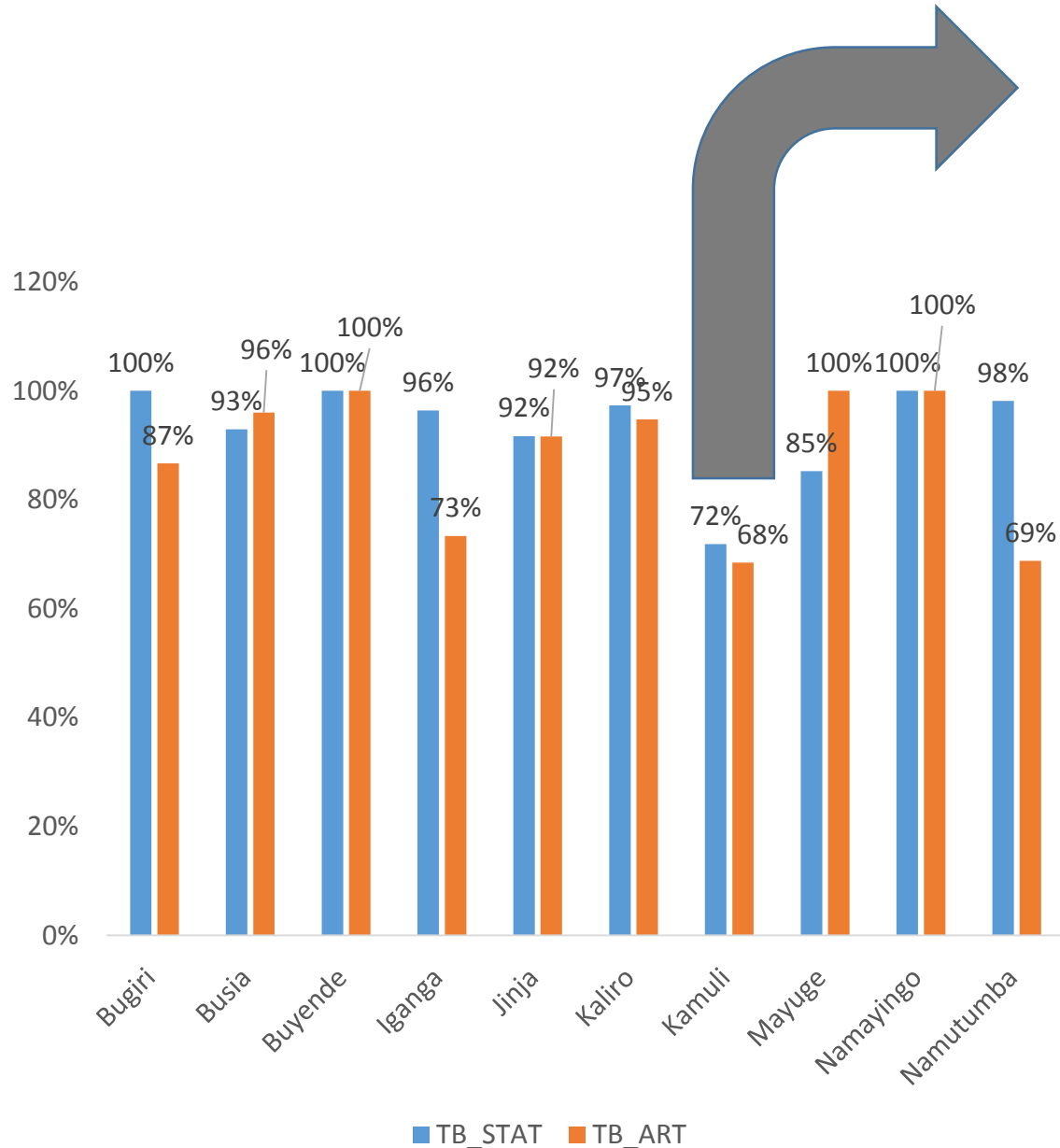


Map data Sources
TB-HIV dataset: DHIS2, Q1-2018
District Geodataset: UBOS 2017



Map data Sources
TB-HIV dataset: DHIS2, Q1-2018
District Geodataset: UBOS 2017

TB_STAT Deep Dive in Kamuli District – RHITES EC



District	Registered TB patients	Registered TB patients tested for HIV	TB/HIV Co-infected patients	TB/HIV Co-infected patients on ART	TB_STAT	TB_ART
Kamuli	110	79	19	13	72%	68%



HF_name	Registered TB patients	Registered TB patients tested for HIV	TB/HIV Co-infected patients	TB/HIV Co-infected patients on ART	TB_STAT	TB_ART
Bugulumbya HC III	2	2	1	1	100%	100%
Bupadhengo HC III	8	8	1	1	100%	100%
Kamuli HOSPITAL	39	19	4	3	49%	75%
Kamuli Mission Hospital	14	14	5	0	100%	0%
Kitayunjwa HC III	22	11	1	1	50%	100%
Lulyambuzi HC III	1	1	0	0	100%	
Nabirumba HC III	2	2	2	2	100%	100%
Namwendwa HC IV	8	8	1	1	100%	100%
Nankandulo HC IV	11	11	3	3	100%	100%
Nawanyago HC III	3	3	1	1	100%	100%



UGANDANS AND AMERICANS
IN PARTNERSHIP TO FIGHT HIV/AIDS



USAID/SITES